

PATIO DOOR SELECTION MADE EASY

The Right **Function**, The Right **Style**, The Right **Details**


Milgard
WINDOWS & DOORS

Milgard.com



Tuscany® Series | V400 Vinyl Sliding Patio Door

PATIO DOOR SELECTION

IT'S AS EASY AS 1-2-3

Your choices are wide open when it comes to selecting new patio doors. This helpful guide offers tips and ideas to make it easy to choose the right custom made patio doors for your home.

STEP 1: FUNCTION

Operating Style and Size	4
Choosing the Location	7

STEP 2: STYLE

Frame Material	9
Milgard Series	11

STEP 3: DETAILS

Colors	13
Grids	14
Hardware	14
Energy Efficiency	15
Security	15
Warranty	16
Why Milgard	18

THE RIGHT FUNCTION

Let's begin with looking at which room of your home needs a patio door. Is it located in your kitchen, dining area or living room? Will it lead to a backyard or second floor balcony? Each room may need a patio door that operates differently, depending on how you plan to use it.



Ultra™ Series | C650 Sliding Patio Door

OPERATING STYLE AND SIZE

The operating style you select should suit the room itself, not only for aesthetics, but, also for general usability. When we talk about an operating style, we are referring to the way in which the patio door opens, plus, daylight and ventilation considerations.

LET'S EXPLORE THE OPTIONS:

SLIDING

When you are working with a pre-existing door opening or limited floor plan space, **sliding patio doors** are a great option. Designed with either a right-hand or left-hand operation, these doors slide along a horizontal track. You can generally select 2, 3, or 4 panel configurations in custom sizes to suit your space.



SLIDING



Tuscany® Series | V400 Sliding Patio Door



SWING

SWINGING

Swinging patio doors elevate the look of a home and are very stylish. Known for their panes of glass and the ability to let in a lot of light you can choose from **in-swing** or **out-swing** operating styles. To determine which is right for you, there are a few things to consider:

- **Hinges:** Which side of your home do you want the hinges to show? They are inside the home for In-swing and on the exterior for out-swing.
- **Space:** How much space do you have? With an In-swing door, you need clearance inside your home to allow the door to open without hitting any furniture. For out-swing, you need a clear path exiting the home to allow for the width of the door swinging outward.

Tuscany® Series swing doors available in AZ, CA, and NV only.



SWING WITH SIDELIGHTS

SIDELIGHTS

Looking for more ventilation or light into a room? Consider adding sidelights. Available in fixed or operable configurations.



Sidelights

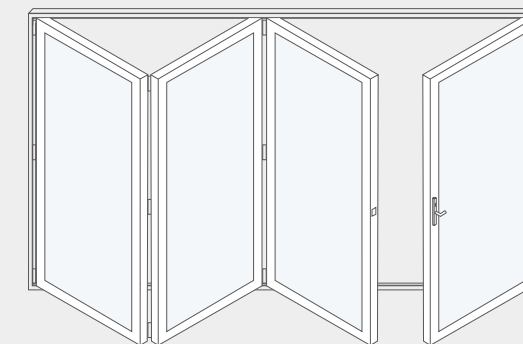
AX550 MOVING GLASS WALLS

Beautiful **AX550 Moving Glass Walls** operate smoothly with the push of a finger, despite their large size. It's the sealed, stainless steel, ball bearing rollers that help them glide along.

There are 3 options for moving glass walls:

BI-FOLD DOORS

With a **bi-fold door**, each panel of the door to folds on top of the adjacent panel as it opens. (Like an accordion fold.) This creates a huge patio door opening that really lets the outside in. When the panels are stacked and folded against each other.



BI-FOLD

STACKING DOORS

When **stacking doors** open, each panel stacks on top of each other, while it slides down the track. When fully open, your living room extends into your patio space and your home is filled with natural light and fresh air.



STACKING

POCKET DOORS

If you want the panels of your patio doors to disappear from view when the door is open, you'll want **pocket doors**. As the panels slide open, they are tucked into a wall pocket out of sight creating an open-air retreat.



POCKET

CHOOSING THE LOCATION

Knowing that the patio door you select for your home may differ depending on the room, here are a few things to keep in mind:

- If you are selecting a patio door for replacement in an existing home, take note of the available space near the door. If it is limited, you may only want to look at sliding patio doors.
- In addition to the space, think about what furniture that may be nearby that can allow room for the opening and closing of an In-swing door.

- The same holds true for your patio furniture and out-swing doors, be sure to factor that in before you select the door.

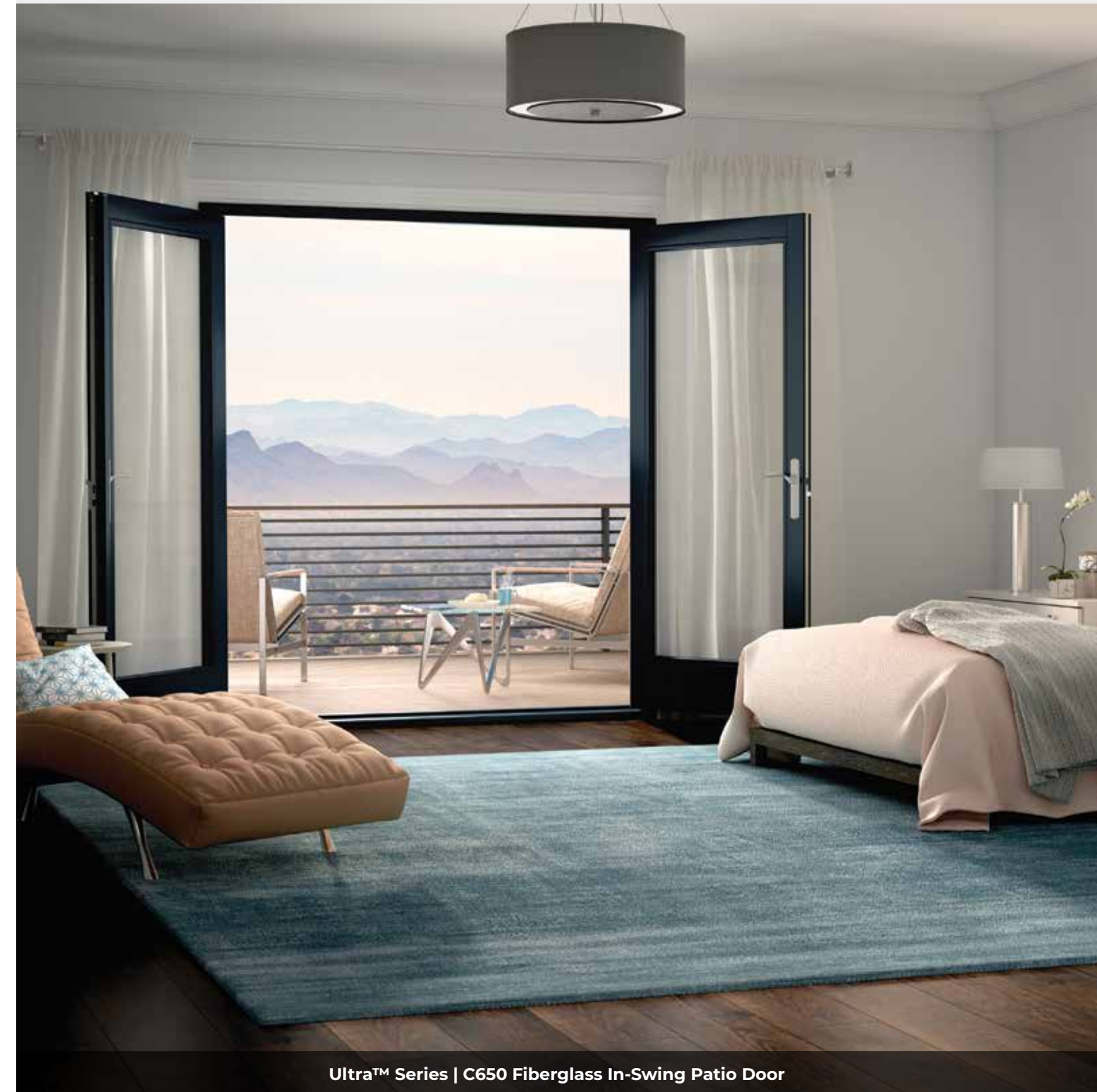
- If you are beginning new home construction, think about the flow of the entire home regarding entries and exit doors. Leave ample space on the exterior or interior if you like the look of swing doors.

- When remodeling a room, keep your budget in mind before falling in love with a particular operating style. For example, you may need additional structural support to carry the weight of a moving glass wall that hangs from the top.

Tuscany® Series swing doors available in AZ, CA, and NV only.



Tuscany® Series | V400 Patio Door



Ultra™ Series | C650 Fiberglass In-Swing Patio Door

THE RIGHT STYLE

A patio door can reflect your personal style. The one you select can impact the way your home looks and functions.

MAKE A STATEMENT FRAME MATERIAL

A well-crafted frame can make all the difference in your patio door performance. In addition to the look of the frame itself, think about what material is best suited for the region you live in.



Trinsic™ Series | V300 Patio Door



VINYL frames are known for being energy efficient due to their ability to trap air. In addition to their insulating properties, vinyl frames are UV resistant, require little maintenance and are generally more affordable than other frame materials. This is a very common and popular material that works well in most climates.



FIBERGLASS is an innovative option that resists swelling, rotting and warping. They are exceptionally strong, low-maintenance and ideal for any style of home or climate. This is a beautiful option that is long lasting and durable.



ALUMINUM is a recognized and established frame material that residential architects and builders love. Light yet strong, aluminum patio doors can be configured into a wide variety of combinations. They are low maintenance and best for non-corrosive environments.

MILGARD SERIES

When quality matters, Milgard patio doors stand up while standing out. We focus on three key elements in the design of every patio door.

It starts with our engineers, known for their industry-leading designs using Milgard patented technologies. Then we produce our own fiberglass frame materials in-house, and use a unique vinyl formula for durable frames that won't absorb moisture. We finish up with insulated glass, delivering superior energy efficiency for added comfort and peace of mind. Browse our vast selection of custom made patio doors, in a variety of styles and colors to suit any home.



AX550 Moving Glass Walls Pocket Door

AX550 MOVING GLASS WALLS

An innovative solution that blurs the line between where your indoor space ends and outdoor living begins.

ULTRA™ SERIES | C650

A strong, beautiful and durable fiberglass door that is built to last.

TUSCANY® SERIES | V400

Our top of the line vinyl door with premium features, an elegant style and exceptional performance.

TRINSIC™ SERIES | V300

Our newest addition to the vinyl line, with a sleek contemporary look for a maximum view. (Only available in select markets.)

THERMALLY IMPROVED ALUMINUM | A250

Featuring a thin, durable frame equipped with a thermal barrier that improves energy efficiency.

[VIEW ALL SERIES](#)



AX550 Moving Glass Walls Stacking Door

THE RIGHT DETAILS



Available color options vary by product line. Please see a Milgard Certified Dealer for details.

Now it's time to think about additional details. There are a variety of immediate and long-term benefits to consider when selecting your new patio doors. Here are a few things to look at for added beauty, comfort and peace of mind.

COLORS

Black Bean or Espresso? We have a wide variety of exterior colors available, depending on the frame material you choose. Looking for a black exterior frame with a matching interior? You'll find this popular look that designers love in our Ultra™ Series fiberglass line.



Ultra™ Series | C650 Out-Swing Patio Door

GRIDS

Patio door grids are a distinctive way to liven up the look of your home, whether you're admiring it from the inside or out. Plus, grids can make a door match a historical period or architectural style. They can also turn a large open pane into something extraordinary.



Tuscany® Series | V400 Vinyl In-Swing Patio Door

Tuscany® Series swing doors available in AZ, CA, and NV only.

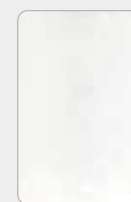
HARDWARE

You can also choose different hardware colors, depending on the patio door series selected. For example, Satin Nickel, Oil Rubbed Bronze and Brushed Chrome add a nice touch to our Tuscan Series patio doors. [Learn more.](#)



Operating your patio door should be easy to do for everyone in the home. Innovations like **SmartTouch®** handles help you open your door and close and lock it one smooth, single motion.

Available hardware styles and finishes vary by product line. Please see a Milgard Certified Dealer for details.



White



Tan



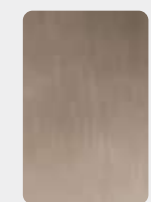
Silver



Oil Rubbed Bronze



Black



Satin Nickel



Brushed Chrome

ENERGY EFFICIENCY

According to the U.S. Department of Energy, leaky and inefficient windows, and doors account for up to 25 percent of the average household's energy bills. Some sources estimate it being as high as 40 percent.

For the utmost in comfort and energy efficiency, Milgard customizes our patio doors and their components to the climate of your region. From the glass coating to the frame design, we engineer the perfect patio doors for where you live. Look for those that are **ENERGY STAR® qualified**.

SECURITY AND PRIVACY

The SecurityMax™ Package is our most advanced security and locking system, exclusively for Tuscany® Series sliding patio doors.

It includes a multi-point locking system with the innovative **SmartTouch® Bolt**, a fully integrated, easy-to-use steel bolt that secures your door firmly into the top frame with the flip of a lever. The lock is activated with a single motion of the SmartTouch® door handle, engaging four locking points and securing the door in the top frame, bottom track and at the handle. SmartTouch® Bolt can also let the fresh air in while keeping the door secure in a vented position.

WARRANTY

MAKE SURE YOU ARE COVERED

At Milgard, we build our windows and patio doors to last. With the dedication to quality that we put into building the best windows in the business, it wouldn't make sense to back them with anything less than a warranty you can count on.

Milgard offers industry-leading and competitive warranties depending on the series you choose. Backed by our factory trained technicians, you can rest assured in your window and patio door selection and enjoy a comfortable home today.

LEARN MORE AND SEE COMPLETE DETAILS AT [MILGARD.COM/WARRANTY](https://www.milgard.com/warranty)



AX550 Moving Glass Walls Bi-Fold Door



Tuscany® Series | V400 Sliding Patio Door



Ultra™ Series | C650 Sliding Patio Door

WHY MILGARD

QUALITY

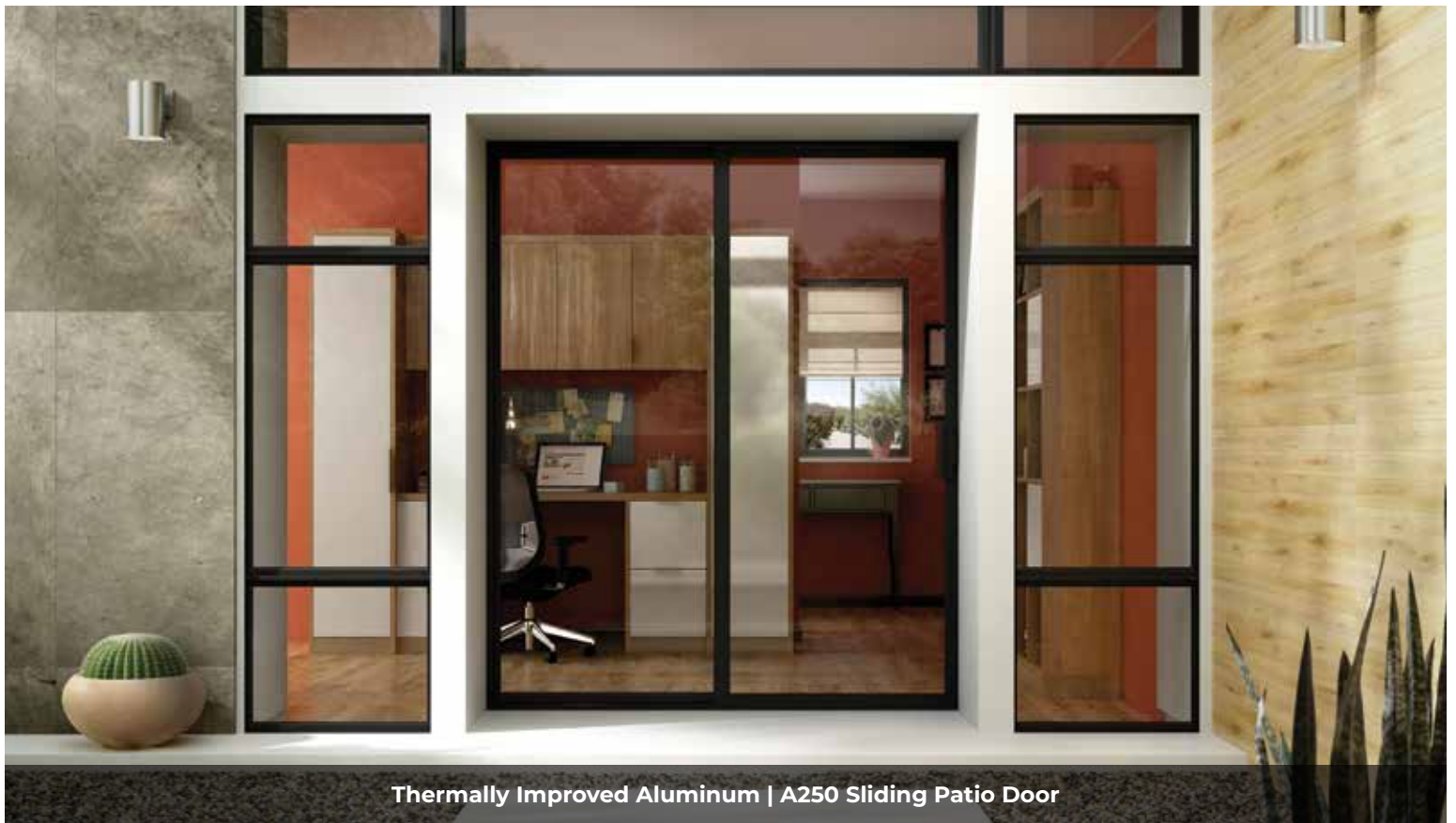
Milgard offers award-winning windows and patio doors built for long lasting comfort. For over 50 years, industry experts have consistently recognized Milgard as a trusted brand. By using a unique vinyl formula and producing our fiberglass frame materials in-house, we can more closely monitor for quality control.

EXPERIENCE

Since 1962, Milgard Windows & Doors has designed and assembled superior, top quality windows and patio doors that can help make your home more comfortable. Milgard engineers are known for their industry-leading designs using patented technologies. Whatever your project calls for, Milgard has the right product that can beautifully reflect your vision. From new construction to home remodeling, all Milgard windows and patio doors are custom made to your exact specifications.

SERVICE

We serve the Western U.S. and Canada with a dozen full-service facilities and customer care centers. Our belief is by being close to our customers, we can provide you with better service.



Thermally Improved Aluminum | A250 Sliding Patio Door

PATIO DOOR SELECTION MADE EASY

STILL NEED HELP?

REQUEST A FREE
CONSULTATION

Ultra™, Trinsic™, SmartTouch®, Tuscany®, Style Line®, and SecurityMax™ are trademarks of Milgard Manufacturing, LLC

ENERGY STAR® is a registered trademark of the U.S. Environmental Protection Agency. Milgard is proud to be an ENERGY STAR partner.

Milgard_DSG 080121 © 2021 Milgard Manufacturing, LLC

**Milgard**
WINDOWS & DOORS

[Milgard.com](https://www.milgard.com)